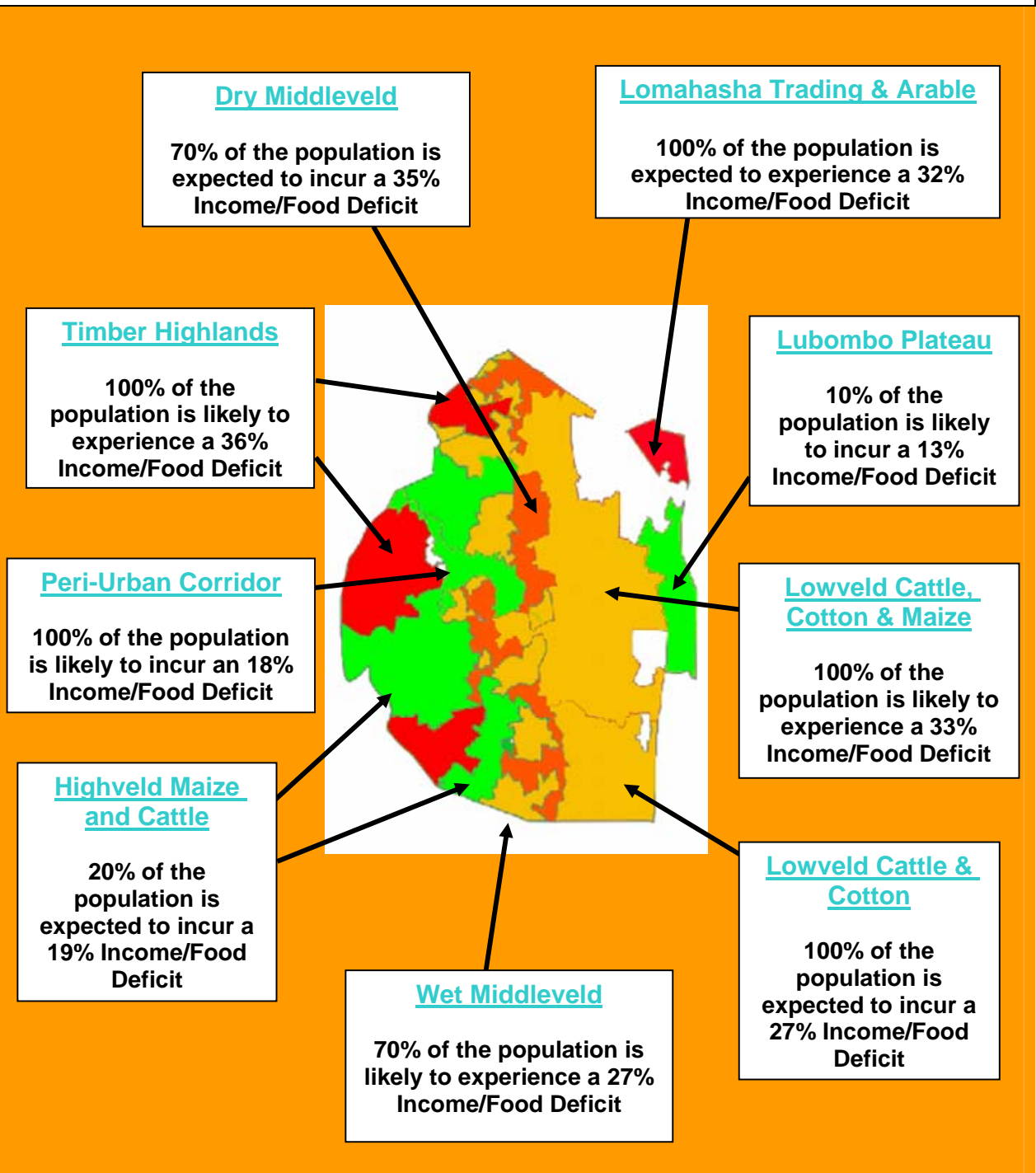


Swaziland Vulnerability Assessment Committee (Swazi VAC) Annual Vulnerability Monitoring Report May 2004

Highlights



NB: This VAC study uses the current official population growth rate of 2.4% (CSO). Income/Food deficits are calculated using 400gms/person/day. For more details on the map above, especially to delineate Middleveld and Highveld areas please refer to the map (figure 1) in the report.

EXECUTIVE SUMMARY	5
CHAPTER 1: INTRODUCTION	8
<i>Objectives of the Report.....</i>	8
<i>Background.....</i>	8
<i>Current Season Context.....</i>	9
CHAPTER 2: VULNERABILITY ANALYSIS – APPROACH UTILISED	12
<i>Livelihoods Based Vulnerability Assessment Approach</i>	12
<i>Analytical Approach 2004</i>	13
CHAPTER 3: HAZARDS AND SHOCKS AFFECTING LIVELIHOODS – NATIONAL TRENDS AND CURRENT YEAR ANALYSIS	15
PRODUCTION AND SUPPLY CHANGES	15
<i>Crop Production and Rainfall</i>	15
<i>National Cereal Balance Sheet – 2004/5 Marketing Year.....</i>	18
<i>Livestock and Grazing Conditions.....</i>	20
<i>Cash Crops</i>	23
MARKET PRICE CHANGES.....	25
HIV/AIDS PANDEMIC	27
EMPLOYMENT	28
CHAPTER 4: ASSESSMENT OUTCOMES.....	30
OVERALL INCOME/FOOD DEFICITS – ALL ZONES	31
<i>Highveld Maize and Cattle Livelihood Zone</i>	34
<i>Timber Highlands Livelihood Zone</i>	37
<i>Peri-Urban Livelihood Zone.....</i>	40
<i>Wet Middleveld Livelihood Zone</i>	42
<i>Dry Middleveld Livelihood Zone</i>	44
<i>Lowveld Cattle, Cotton and Maize Livelihood Zone.....</i>	47
<i>Lowveld Cattle and Cotton Livelihood Zone</i>	49
<i>Lomahasha Trading and Arable Livelihood Zone</i>	51
<i>Lubombo Plateau Livelihood Zone.....</i>	53
CHAPTER 5: CONCLUSIONS AND RECOMMENDATIONS.....	55
CONCLUSIONS AND IMPLICATIONS	55
INCOME / FOOD DEFICITS.....	58
RECOMMENDATIONS	60
<i>Bibliography</i>	63
<i>Annex 1: Chiefdoms visited.....</i>	65

Table of Tables

TABLE 1: BREAKDOWN OF INTERVIEWS BY LIVELIHOOD ZONE.....	14
TABLE 2: CATTLE POPULATION ESTIMATES 1993-2002 (SNL)	20
TABLE 3: GOAT POPULATION ESTIMATES 1993-2002	22
TABLE 4: SHEEP POPULATION ESTIMATES 1993-2002 BY AGRO-ECOLOGICAL ZONE	23
TABLE 5: INCOME/FOOD DEFICITS BROKEN DOWN BY SEG OFF-SET BY CASH TRANSFER AND FOOD SUPPORT OPTIONS.....	33

Table of Figures

FIGURE 1: LIVELIHOOD ZONE MAP OF SWAZILAND (POPULATION 1997 CENSUS)	9
FIGURE 2: AREA OF MAIZE CULTIVATED AND MAIZE PRODUCTION ON SNL 1986/7 TO 2003/4.....	15
FIGURE 3: RAINFALL IN HIGHVELD 2003/4	16
FIGURE 4: RAINFALL IN MIDDLEVELD 2003/4.....	16
FIGURE 5: RAINFALL IN LOWVELD 2003/4	17

FIGURE 6: RAINFALL IN LUBOMBO PLATEAU 2003/4	17
FIGURE 7: MAIZE PRODUCTION FORECASTS, 2003/4.....	18
FIGURE 8: NATIONAL CEREAL BALANCE SHEET FOR THE 2004/5 MARKETING YEAR (AS AT 30 TH APRIL)	18
FIGURE 9: CATTLE POPULATION, 1993-2002 BY AGRO-ECOLOGICAL ZONE (SNL)	20
FIGURE 10: CATTLE CONDITION – AVERAGE MONTHLY WEIGHT IN KG – 1995-2003 (SALE RECORDS)	21
FIGURE 11: CATTLE SALES – OFF TAKE KGs, 1995-2003.....	21
FIGURE 12: MILK DELIVERIES (LITRES) 2000 TO 2004.....	22
FIGURE 13: GOAT POPULATION, 1993-2002 BY AGRO-ECOLOGICAL ZONE (SNL)	22
FIGURE 14: SHEEP POPULATION, 1993-2002 BY AGRO-ECOLOGICAL ZONE (SNL).....	23
FIGURE 15: ANNUAL TOTAL PURCHASES OF MAIZE BY NMC FROM SWAZI FARMERS	23
FIGURE 16: AREA OF SUGAR CANE CUT (HA)	24
FIGURE 17: SUGAR PRODUCTION (MT)	24
FIGURE 18: COTTON PRODUCTION (MT)	24
FIGURE 19: OFFICIAL MAIZE MEAL PRICES, 1998-2003	25
FIGURE 20: MILK PRICES (EMALANGENI) 2000 - 2004.....	26
FIGURE 21: CATTLE PRICES (EMALANGENI), 1995 - 2003.....	26
FIGURE 22: HIV/AIDS PREVALENCE RATES, 1992-1994 (ANTE-NATAL CLINIC DATA).....	27
FIGURE 23: SWAZIS EMPLOYED IN SA MINES	28
FIGURE 24: INCOME/FOOD DEFICITS FOR POPULATIONS BY LIVELIHOOD ZONE.....	31

Acronyms

AIDS	:	ACQUIRED IMMUNO-DEFICIENCY SYNDROME
CFSAM	:	CROP & FOOD SUPPLY ASSESSMENT MISSION
CSO	:	CENTRAL STATISTICS OFFICE
DFID	:	DEPARTMENT FOR INTERNATIONAL DEVELOPMENT
EMOP	:	EMERGENCY OPERATIONS
FANR	:	FOOD, AGRICULTURE & NATURAL RESOURCES DIRECTORATE (SADC)
FAO	:	FOOD AND AGRICULTURE ORGANISATION
FEZ	:	FOOD ECONOMY ZONE
GOS	:	GOVERNMENT OF SWAZILAND
HH	:	HOUSEHOLDS
HIV	:	HUMAN IMMUNO-DEFICIENCY VIRUS
LZ	:	LIVELIHOOD ZONE (ALSO KNOWN AS FOOD ECONOMY ZONE)
MEPD	:	MINISTRY OF ECONOMIC DEVELOPMENT AND PLANNING
MoAC	:	MINISTRY OF AGRICULTURE & COOPERATIVES
MT	:	METRIC TONNES
Mz	:	MAIZE
NEWU	:	NATIONAL EARLY WARNING UNIT
NGO	:	NON-GOVERNMENT ORGANIZATION
NMC	:	NATIONAL MAIZE CORPORATION
NVAC	:	NATIONAL VULNERABILITY ASSESSMENT COMMITTEE
RVAC	:	REGIONAL VULNERABILITY ASSESSMENT COMMITTEE
SADC	:	SOUTHERN AFRICAN DEVELOPMENT COMMUNITY
SC SZ	:	SAVE THE CHILDREN SWAZILAND
SC UK	:	SAVE THE CHILDREN UK
SEG	:	SOCIO-ECONOMIC GROUP
SFDF	:	SWAZILAND FARMERS DEVELOPMENT FOUNDATION
SMI	:	SWAZILAND MEAT INDUSTRIES
SNL	:	SWAZI NATION LAND
SWAZI VAC	:	SWAZILAND VULNERABILITY ASSESSMENT COMMITTEE
UNAIDS	:	JOINT UNITED NATIONS PROGRAMME ON HIV/AIDS
UNICEF	:	UNITED NATIONS CHILDREN’S FUND
VAC	:	VULNERABILITY ASSESSMENT COMMITTEE
VAM	:	VULNERABILITY ANALYSIS AND MAPPING UNIT (WFP)
WFP	:	WORLD FOOD PROGRAMME